

**TRI  
MO**

ARCHITECTURAL  
SOLUTIONS

# PRODUCT PORTFOLIO

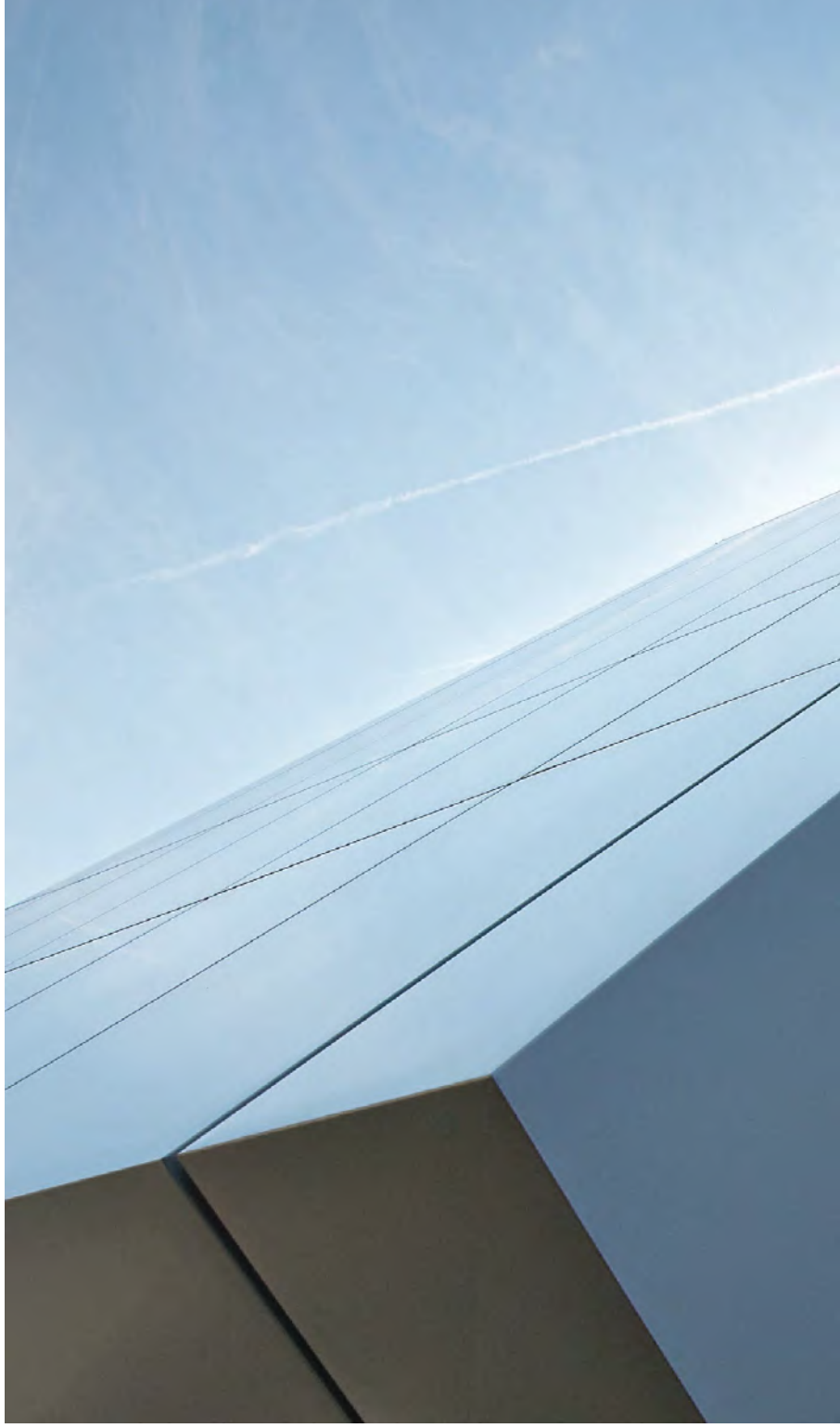
# CONTENT

|           |                                       |    |
|-----------|---------------------------------------|----|
| <b>01</b> | <b>COMPANY PROFILE</b>                | 01 |
|           | HISTORY                               | 05 |
| <b>02</b> | <b>SERVICES</b>                       | 07 |
|           | TECHNICAL SUPPORT AND CONSULTING      | 09 |
| <b>03</b> | <b>FAÇADE SYSTEMS</b>                 | 11 |
|           | QBISS ONE                             | 13 |
|           | QBISS SCREEN                          | 17 |
|           | TRIMOTERM                             | 21 |
|           | ARTME                                 | 27 |
| <b>04</b> | <b>ROOFS</b>                          | 29 |
| <b>05</b> | <b>MODULAR SPACE SOLUTIONS</b>        | 33 |
| <b>06</b> | <b>FIXING AND DECORATIVE ELEMENTS</b> | 37 |
| <b>07</b> | <b>MATERIALS</b>                      | 41 |
| <b>08</b> | <b>WORLDWIDE REALIZED PROJECTS</b>    | 45 |





# COMPANY PROFILE





01



50+

YEARS OF EXPERIENCE

MORE THAN

50 MILLION M<sup>2</sup>

OF FACADES AND ROOFS PRODUCED

PROJECTS IN MORE THAN

100

COUNTRIES WORLDWIDE

MORE THAN

20 000

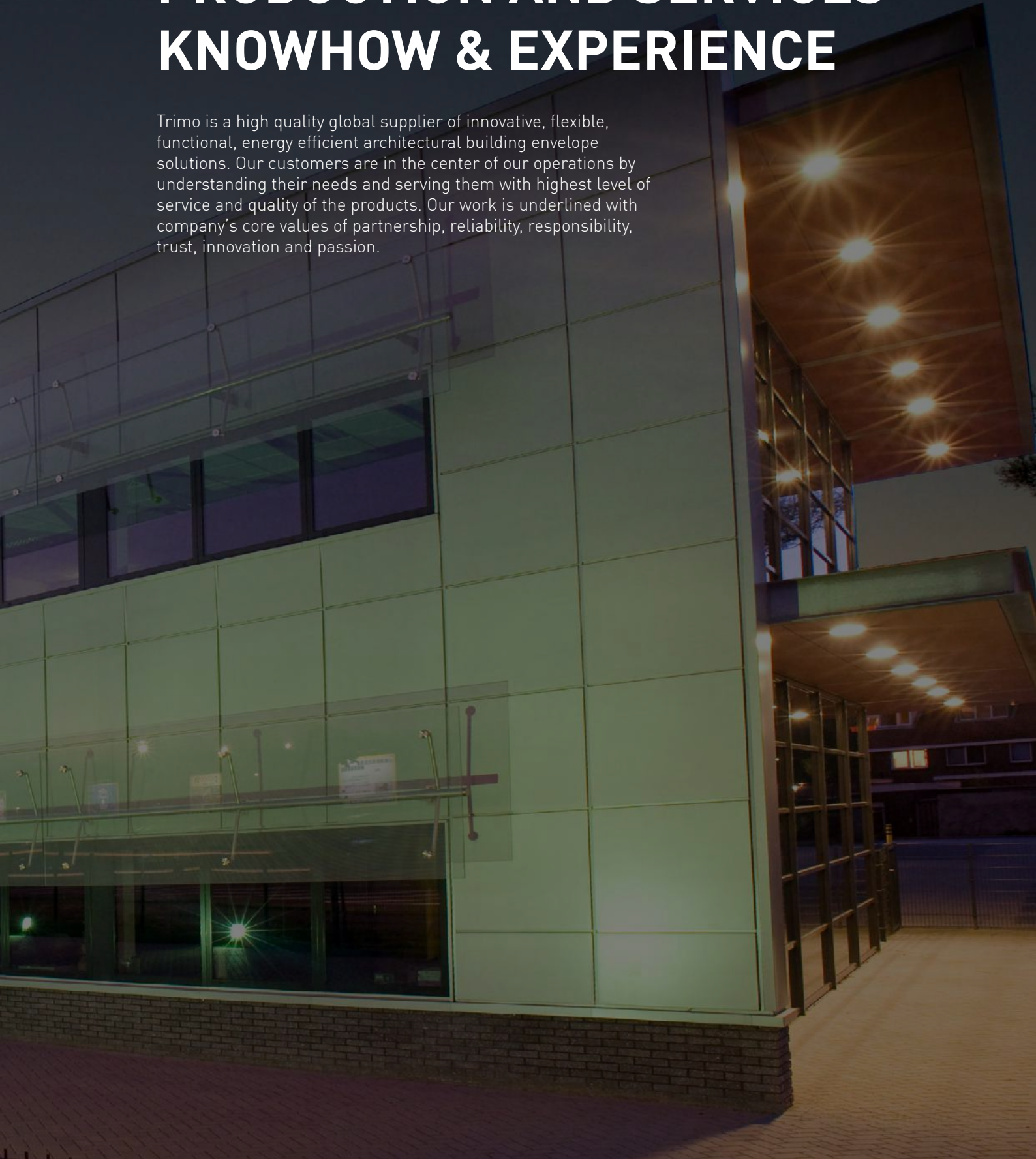
CUSTOMERS & PARTNERS

CE MARKED & CERTIFIED



# WORLDWIDE ENGINEERING, PRODUCTION AND SERVICES KNOWHOW & EXPERIENCE

Trimo is a high quality global supplier of innovative, flexible, functional, energy efficient architectural building envelope solutions. Our customers are in the center of our operations by understanding their needs and serving them with highest level of service and quality of the products. Our work is underlined with company's core values of partnership, reliability, responsibility, trust, innovation and passion.



# HISTORY

## DEFINING MOMENTS IN THE HISTORY OF TRIMO GROUP

Establishment of Trimo

**First in the world  
producing Trimoterm**

Fireproof panels with  
mineral wool core on  
continuous line

Production  
begins in **Serbia**

1961

1974

1987

1989

2007

Production start of  
Thermal-insulated  
**PU panels**

**1st container** produced





Innovative  
**Qbiss One**  
facade system  
introduced to the  
market

New **corporate  
identity** of  
Trimo Group

2008

2009

2010

2016

2019

Supply of façade  
panels for con-  
struction of the  
first **CO<sub>2</sub> neutral  
building** in the  
world

**ArtMe** unique facade  
design received “**red  
dot**” product design  
award

Global launch of  
**Qbiss Screen** -  
innovative metal  
rainscreen system



# SERVICES





02

# TECHNICAL SUPPORT AND CONSULTING

From an initial idea to the final implementation: Trimo team supports you within every phase of your project, from planning and architectural design throughout the construction and handover.



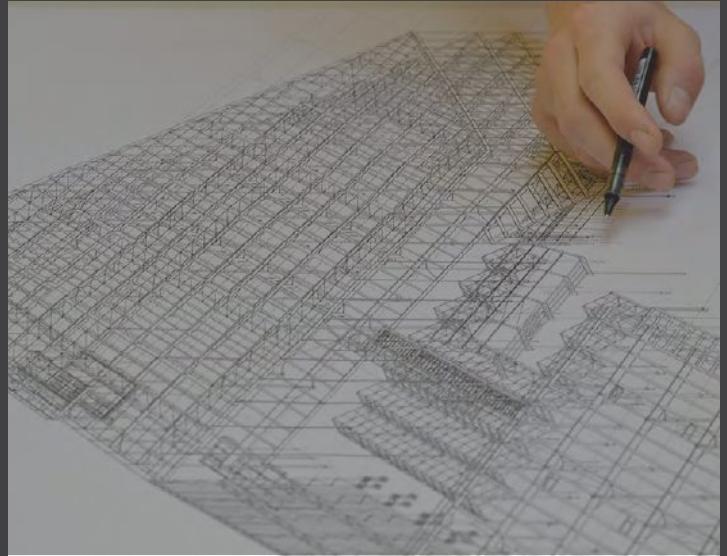


# DESIGN

Trimo's design team is comprised of **architects, designers, structural engineers, design and project managers** that together make design plans and drawings quickly and efficiently, professionally and with an understanding of the customers' needs and expectations.

Trimo team of experts monitors the global market by recognising design requirements in accordance with the latest **standards** – European EN norms, German, Russian SNIP, American ASTM, and various others and designs projects according to individual and specific requirements.

Trimo provides a large range of **architectural and engineering principle details for sandwich panel facades, walls and roofs** as well as is known for giving a professional advice towards bespoke details and individual custom made solutions with a team of dedicated technical support and product development.



# BUILDING INFORMATION MODELLING - BIM

We have developed BIM libraries of our products for most sophisticated engineering software ArchiCAD and Revit in order to support and speed up the building design process

Trimo BIM libraries are available on <https://trimo-group.com/en/trimo/downloads/design-tools/bim/>



# TECHNICAL SUPPORT

Trimo technical consulting team is a partner you can count on to provide comprehensive **support throughout the entire duration of your project**.

Technical support includes **visualisations, rendering, detailing, BIM** engineering, virtual and augmented reality, **structural calculations** and **management of changes, information and resources**.

Technical consulting team also provides special product solutions designed to perfectly suit your project.



# FAÇADE SYSTEMS



03



# QBISS ONE

Qbiss One is a world class-engineered, prefabricated, A1 mineral wool insulated, metal façade system that offers a through wall solution within a single piece of construction element. Façade elements with **embossed corners, unmatched flatness** and **advanced technical characteristics** place Qbiss One alongside the best facade systems in the world.

## TOTAL WALL SOLUTION

- Single component pre-engineered and pre-fabricated construction element
- Self supporting column to column horizontal or floor to floor vertical installation

## LIMITLESS DESIGN POSSIBILITIES

- Embossed element corner design
- Extensive range of interfaces and bespoke elements
- Pre-fabricated corners and curved elements
- 3D corners
- Integrated windows, doors and louvers systems

## MAXIMUM SAFETY

- Class A1 non combustible mineral wool insulation core
- Hi-level insulation values up to 0.15 W/m<sup>2</sup>K
- Fire resistance: up to class EI120 minutes integrity and insulation
- Watertightness up to 1200 Pa
- Highest environmental credentials and A+ BREEAM rating
- Flexible coating guarantees up to 30 years and life time expectancy up to 50 years



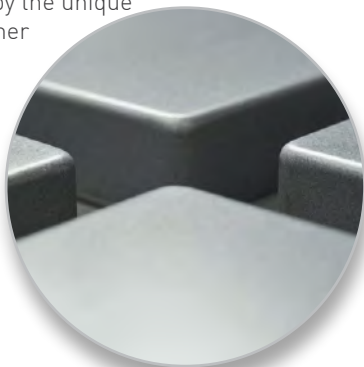


# A DESIGN AND TECHNOLOGICAL BREAKTHROUGH



# QBISS ONE DESIGN

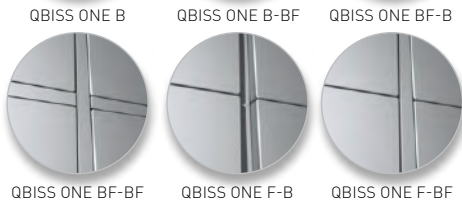
Qbiss One and Qbiss Screen are distinguished by the unique embossed corner of the element which results in superior aesthetics without any cuts, folds or welds.



## JOINT OPTIONS

Qbiss One system allows **various combinations of recessed and flush joints.**

### JOINT OPTIONS FOR HORIZONTAL INSTALLATION



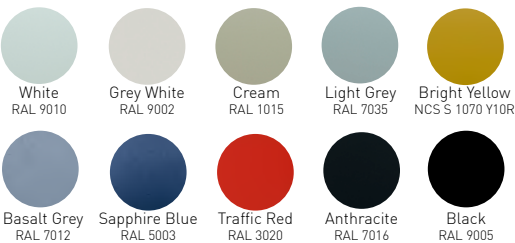
### JOINT OPTIONS FOR VERTICAL INSTALLATION



## COLOUR RANGE

External steel skin is available for different corrosion environments of up to C5 (according to classification in EN12944) and is available in variety of colours. Non-standard colours are available upon request.

### SOLID COLOURS



### SPECIAL METALLIC



### ELEMENTS\*



### STAINLESS STEEL\*\*



\*Colorcoat Prisma and Seren are trademarks of Tata Steel UK Limited  
 \*\*Stainless steel is a bespoke solution and shall be discussed with Trimo technical department on individual project basis from application and availability perspective.  
 Colours may slightly deviate due to different monitors and prints compared to original colours. On request we will send you real metal sample.



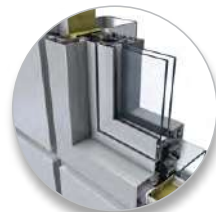
## TYPICAL INSTALLATION DETAILS



BASE DETAIL



TOP PARAPET DETAIL

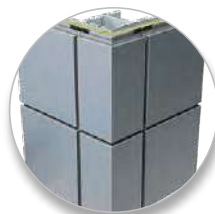


WINDOW FIXED GLASS



WINDOW

## CORNER ELEMENTS



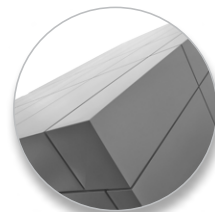
PREFORMED HORIZONTAL  
SHARP-EDGE CORNER



SHARP-EDGED CORNER  
FLASHING



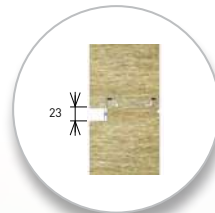
ROUNDED CORNER  
FLASHING



PREFORMED  
3D CORNER



TRANSVERSAL JOINT



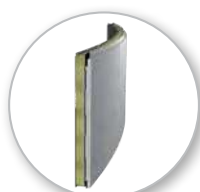
LONGITUDINAL JOINT



Qbiss One **Façade element** consists of two galvanised and pre-finished steel sheets bonded to a non-combustible A1 mineral wool core. All layers together make a solid element of thickness ranging 80 – 250 mm.

The Qbiss One system's **consists of:**

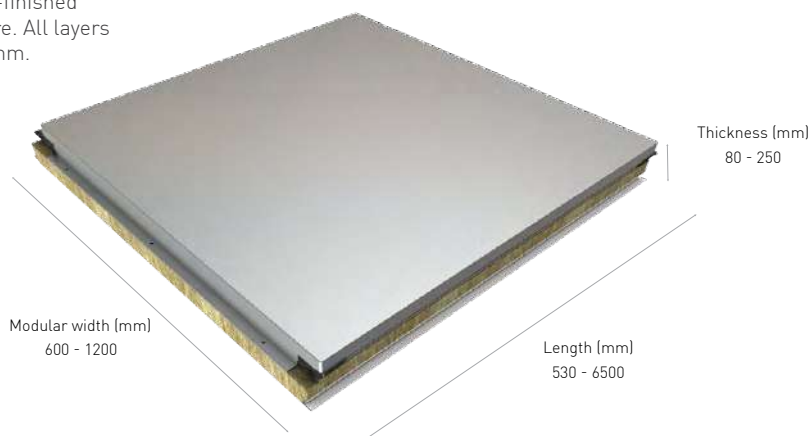
- Modular façade elements
- Fixing and sealing material
- Architectural performance details
- Corner elements
- Adjustable Sub-structure (optional)
- Windows (optional)



CURVED FAÇADE ELEMENT



FLAT FAÇADE ELEMENT



FIRE RESISTANCE CLASS UP TO EI 120  
U VALUE UP TO 0.15 W/m<sup>2</sup>K  
WATER PERMEABILITY UP TO 1200 Pa

# QBISS SCREEN

An innovative metal **rainscreen system** designed for ventilated façade applications and for both new-build and refurbishment use. It comprises of an aluminium **honeycomb core**, bonded between two metal skins, with **embossed corned design**.

It is equally applicable as an exterior and interior wall and soffits bringing a system-approach to the building envelope, which can be fully combined with the Qbiss One insulated architectural building envelope solutions.

**Extremely flat**, Qbiss Screen is also engineered to meet the **highest A2 non-combustibility fire classification** demands and can withstand high wind loads to larger spans as conventional rainscreen systems.

## HIGH QUALITY RAINSCREEN SYSTEM

- Fully prefabricated and self-supporting element
- Embossed corners without cuts, folds or welds
- Extreme element flatness

## LIMITLESS DESIGN POSSIBILITIES

- Fully compatible with Qbiss One facade elements
- Various joint and installation options
- Wide range of colours and material finishes

## MAXIMUM SAFETY

- Class A2 limited combustibility classification
- Quick installation with reduced amount of carrier sub-frame system up to 60%
- Lightweight elements for simple on-site handling and installation



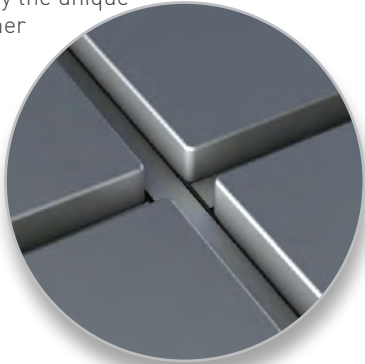


# INNOVATIVE RAINSCREEN



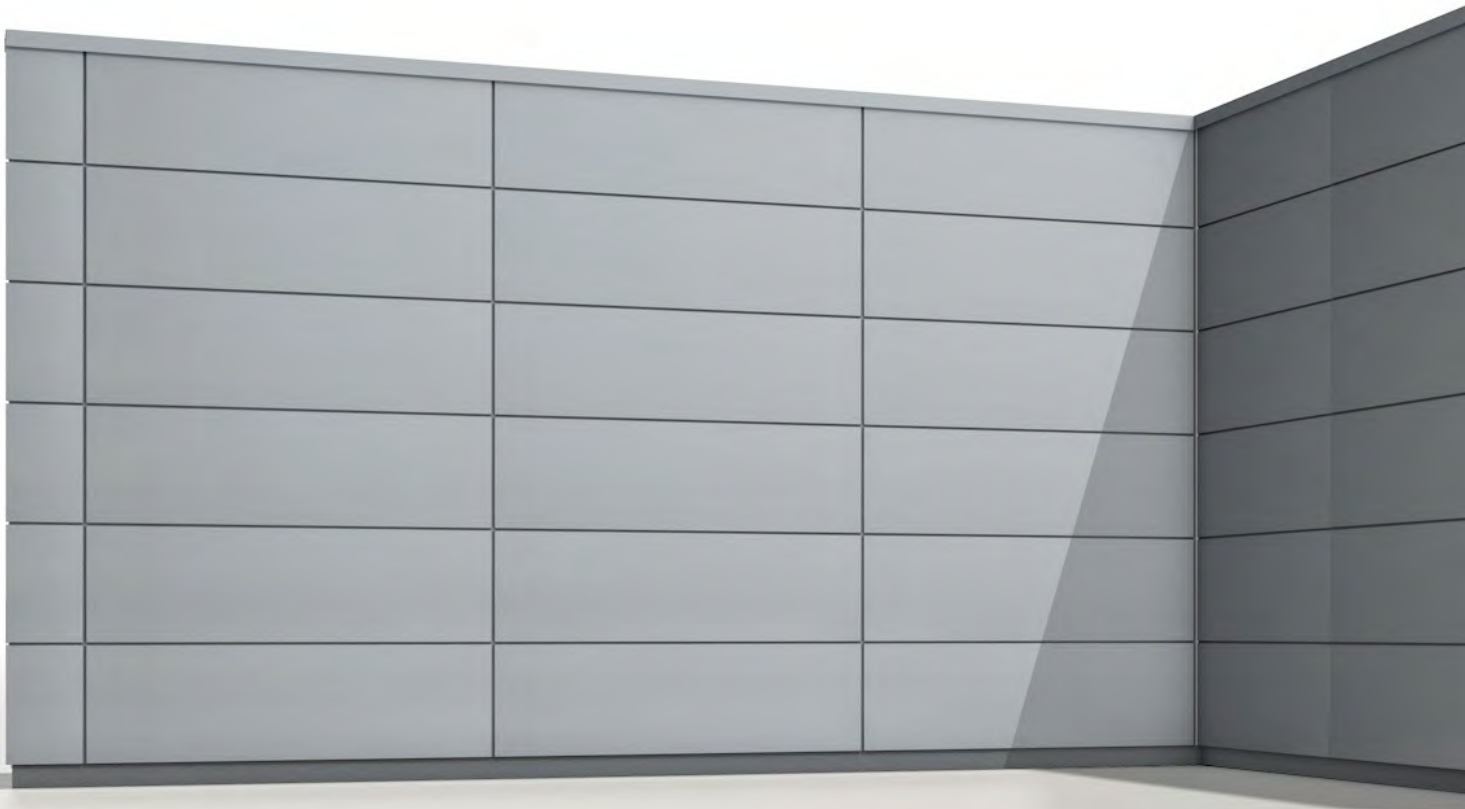
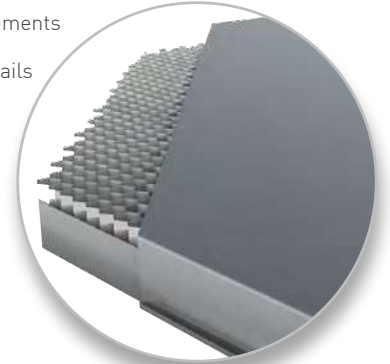
# QBISS SCREEN DESIGN

Qbiss One and Qbiss Screen are distinguished by the unique embossed corner of the element which results in superior aesthetics without any cuts, folds or welds.



## QBISS SCREEN SYSTEM:

- Modular rainscreen façade elements
- Fixing and sealing material
- Architectural performance details
- Corner elements



## JOINT OPTIONS

Qbiss Screen system allows the **various combinations of recessed and flush joints** by horizontal and vertical installation.

### HORIZONTAL INSTALLATION



QBISS SCREEN HR B



QBISS SCREEN HR F-B

### VERTICAL INSTALLATION

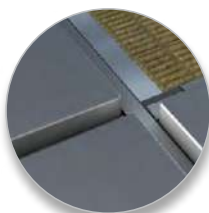


QBISS SCREEN VR B

## TYPICAL INSTALLATION DETAILS



TOP PARAPET DETAIL



JOINT DETAIL



DRIP DETAIL

## CORNER ELEMENTS



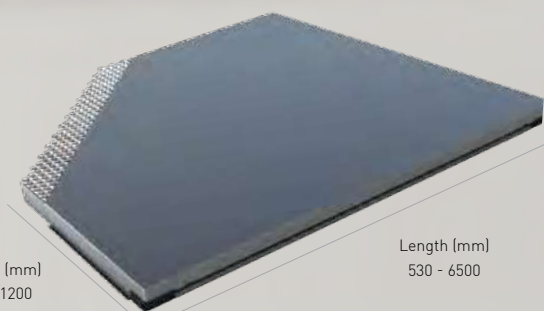
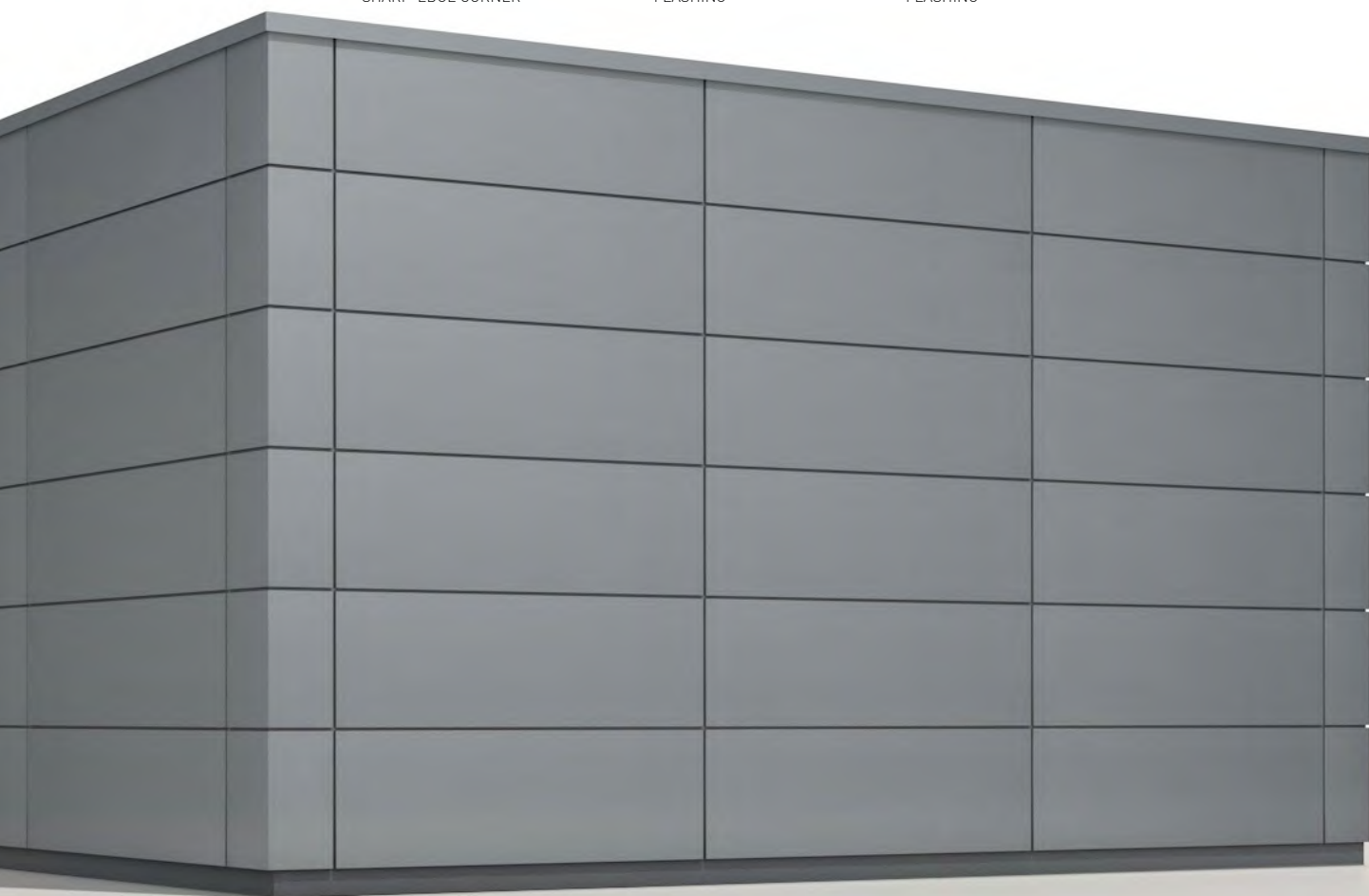
PREFORMED HORIZONTAL  
SHARP-EDGE CORNER



SHARP-EDGED CORNER  
FLASHING



ROUNDED CORNER  
FLASHING



Module (mm)  
600 - 1200

Length (mm)  
530 - 6500

Thickness (mm)  
50

REACTION TO FIRE - ELEMENT (EN 13501-1)  
A2\*

\* According to classification report No. P 1150/17-530-4 (ZAG, 2018)



**TIMELESS INNOVATION**







# TRIMOTERM

Trimoterm fireproof façade system is a high quality, versatile and environmentally friendly construction product where the highest demands of **fire resistance**, **sound reduction** and **thermal insulation** are required. It offers the perfect combination of functionality and durability, whilst also supporting true architectural expression.

Available with a complete system of matching components and meeting country- specific requirements and regulations Trimoterm is suitable for wide range of **external façade** and **roof cladding**, internal **partition walls, fire walls and ceilings**. In addition to various industrial, logistic and commercial build applications, Trimoterm panels can also be successfully utilized in the most demanding environments, such as food processing and pharmaceutical industry, power plants, oil&gas industry applications and many others.

## TOTAL WALL AND ROOF SOLUTION

- Wide range of profile finishes and applications
- Range of ancillary interface items, bespoke solutions, pre-fabricated corners, aluminum extrusions and feature details
- Versatile stand alone system or carrier structural wall for secondary architectural cladding solutions

## MAXIMUM SAFETY

- Class A1 non combustible mineral wool insulation core
- Exceptional fire resistance up to class EI 240 minutes of integrity and insulation
- Advanced thermal and sound insulation and structural spanning performance
- Extremely high level of airtightness and watertightness
- Highest environmental credentials and A+ BREEAM rating





# TRIMOTERM PRODUCT RANGE

## TRIMOTERM POWER T

Trimoterm Power T are roof and facade panels with superior thermal insulation and can reach a U-value of as low as 0.15 W/m<sup>2</sup>K.

## TRIMOTERM POWER S

Trimoterm Power S are long spanning facade panels, which reduce the need for secondary steel construction. Frame-to-frame spanning capability is up to 10 metres depending on the design loads.

## TRIMOTERM SOUND

Trimoterm Sound panels serve as an exceptional protection against noise hazards as well as contributing to the well-being of everyone in the environment. In addition to the standard characteristics of the Trimoterm panels, acoustic panels also have an excellent sound absorbing characteristics. A single-sided perforated structure enables sound absorption of  $DL_a = 8\text{dB}$  and sound insulation of 34 dB for the panel.

## TRIMOTERM BACKING PANEL

Trimoterm Backing panel is designed for a wide variety of uses for both low and high rise residential buildings and other type of buildings. Trimoterm sandwich panels are used as a main structural carrier wall with excellent thermal, water & air permeability and sound performance. It is a replacement for traditional steel framing systems. It provides reliable, prefabricated, high quality support wall as a base for different secondary architectural rainscreen finishes.

## TRIMOTERM BLAST

Trimoterm blast enhanced panel can withstand up to 1.0 bar blast and are suitable for on and off shore construction. Panels are A60 and H120 fire tested and are fire post blast certified.

## PARTITION WALLS AND CEILINGS

Trimoterm panels are suitable for the construction of partition walls, fireproof separation walls and ceilings.

# TRIMOTERM DESIGN

## JOINT OPTIONS

### TRIMOTERM FTV (STANDARD JOINT)

The standard joint system Trimoterm FTV represents the basic fixing method of Trimoterm panels and is suitable for horizontal, vertical and segmental installation of panels.



TRIMOTERM FTV  
(STANDARD JOINT)

### TRIMOTERM FTV HL (HIDDEN JOINT)

The hidden joint system Trimoterm FTV HL offers a clean façade outlook with no visible fixings. Trimoterm panels with hidden joint are mainly intended for vertical installation, but under certain conditions and with limitations, can also be used for various horizontal cladding applications.



TRIMOTERM FTV HL  
(HIDDEN JOINT)



## COLOUR RANGE\*

Trimoterm steel sheet metal is hot galvanised in compliance with EN 10346, and additionally protected by an organic coating in accordance with the coil-coating process (DIN EN 10169/1). The following basic types of organic coatings protection are applied to steel sheet metal based on:

- SP polyester
- PVDF polyvinylidene fluoride
- PUR polyurethane
- PVC polyvinyl chloride, coating or film

Wide range of colour finishes are available for any building, which are engineered to capture the perfect look internally or externally of the building design.

### STANDARD COLOURS



\*Colours may slightly deviate due to different monitors and prints compared to original colours. On request we will send you real metal sample.

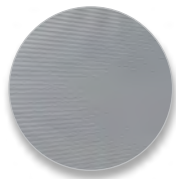


## PANEL PROFILES

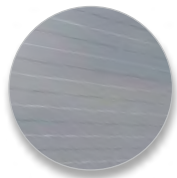
Trimoterm fireproof panels are distinguished by a wide range of profiles that enable the design of a great number of various solutions, tailored to individual buildings.



SMOOTH PROFILE (G)



MICRO-LINED PROFILE (M)



S - PROFILE (S)



V - PROFILE (V)

Full range available at:  
<https://www.trimo-group.com/files/downloads/Trimoterm%20technical%20specification.pdf>

## SYSTEM

Trimoterm offers a wide range of versatile accessories, including fasteners for fixing panels and flashings, sealants, aluminium extrusion profiles, flashings.

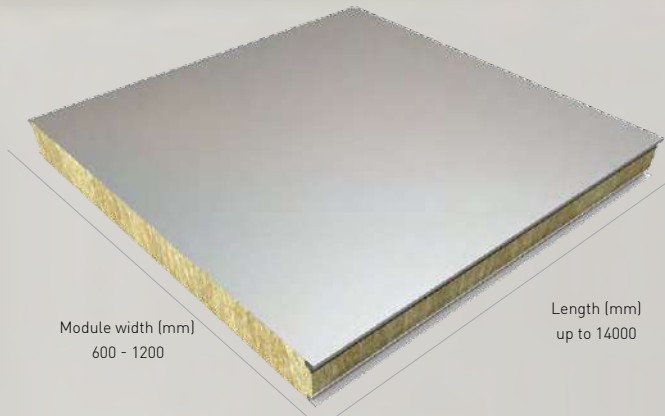
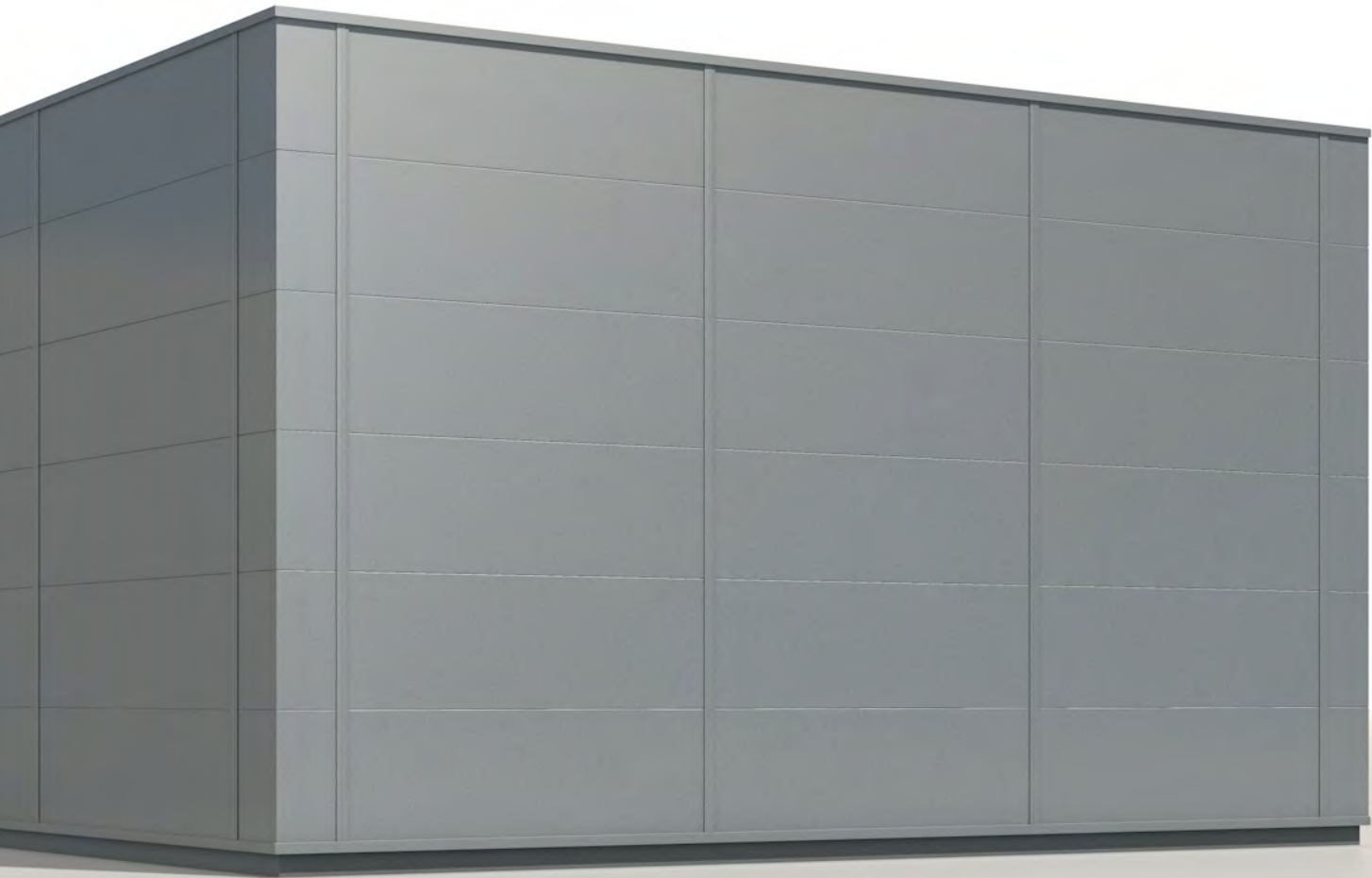
**Rounded and sharp edged pre-fabricated corners** from Trimo's pallet of façade finishing elements, in a creative combination with façade panels, provide special aesthetic effects. They can be used on vertically installed panels, or by a combination of horizontally installed façade panels and a vertically installed corner.



PRE-FORMED SHARP-EDGED CORNER



PRE-FORMED ROUNDED CORNER



Module width (mm)  
600 - 1200

Length (mm)  
up to 14000

Thickness (mm)  
50 - 250

NON-COMBUSTIBLE MINERAL WOOL CLASS A1  
FIRE RESISTANCE CLASS UP TO EI 240  
U VALUE UP TO 0.15 W/m²K

# ARTME

ArtMe surface treatment that allows literally unlimited shapes, patterns and visual effects to be expressed on the facade for dramatic, individual and creative results. From designs and pictures to inscriptions, logos, brands and bespoke creations.

ArtMe uses a highly controlled, **3D-forming technology**, which is being used for the first time on completed façade elements with pre-coated steel-sheet surfaces. Recognizing the importance of product performance, the original integrity and characteristics of the façade elements are preserved without compromise.



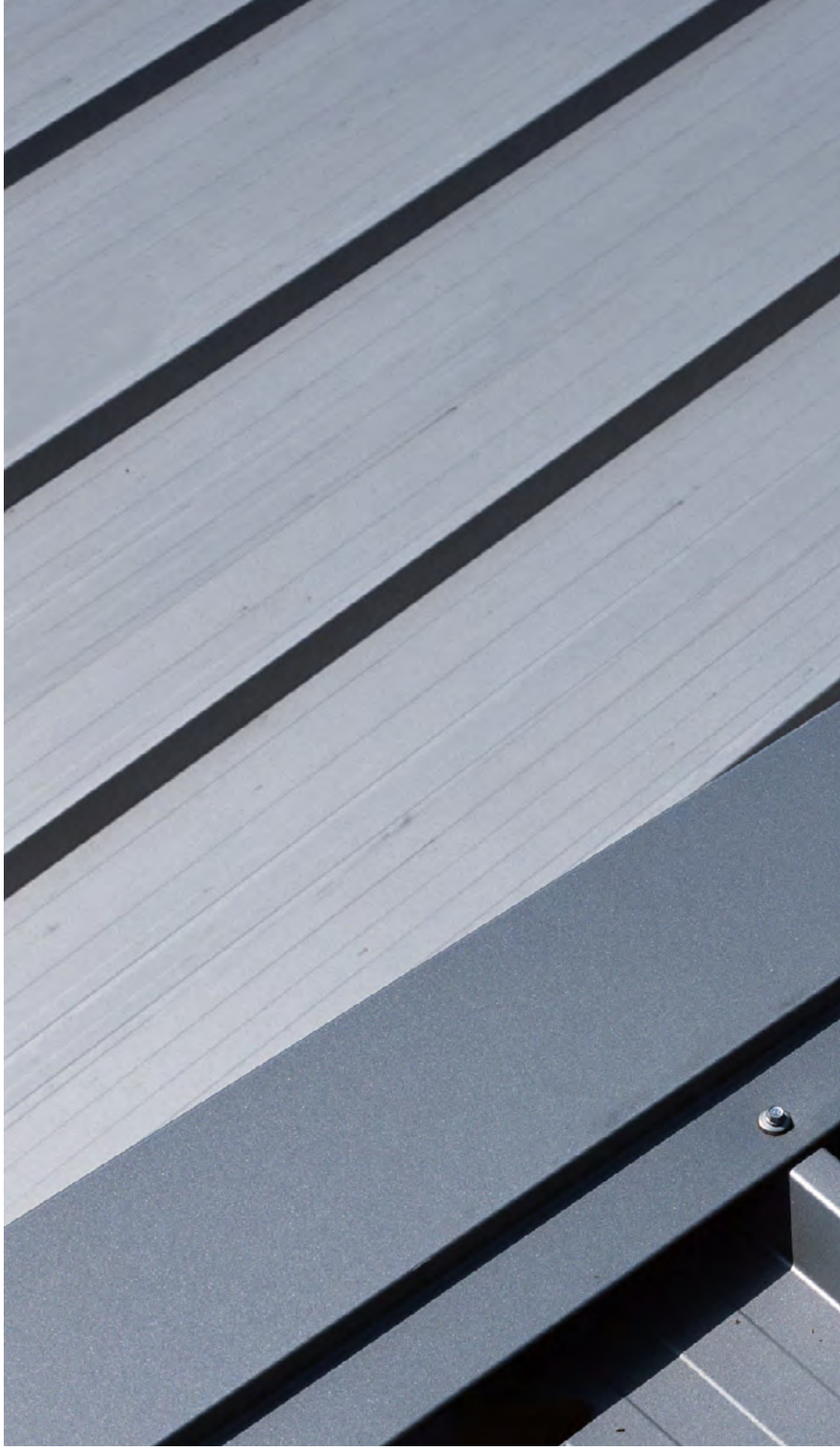
reddot design award

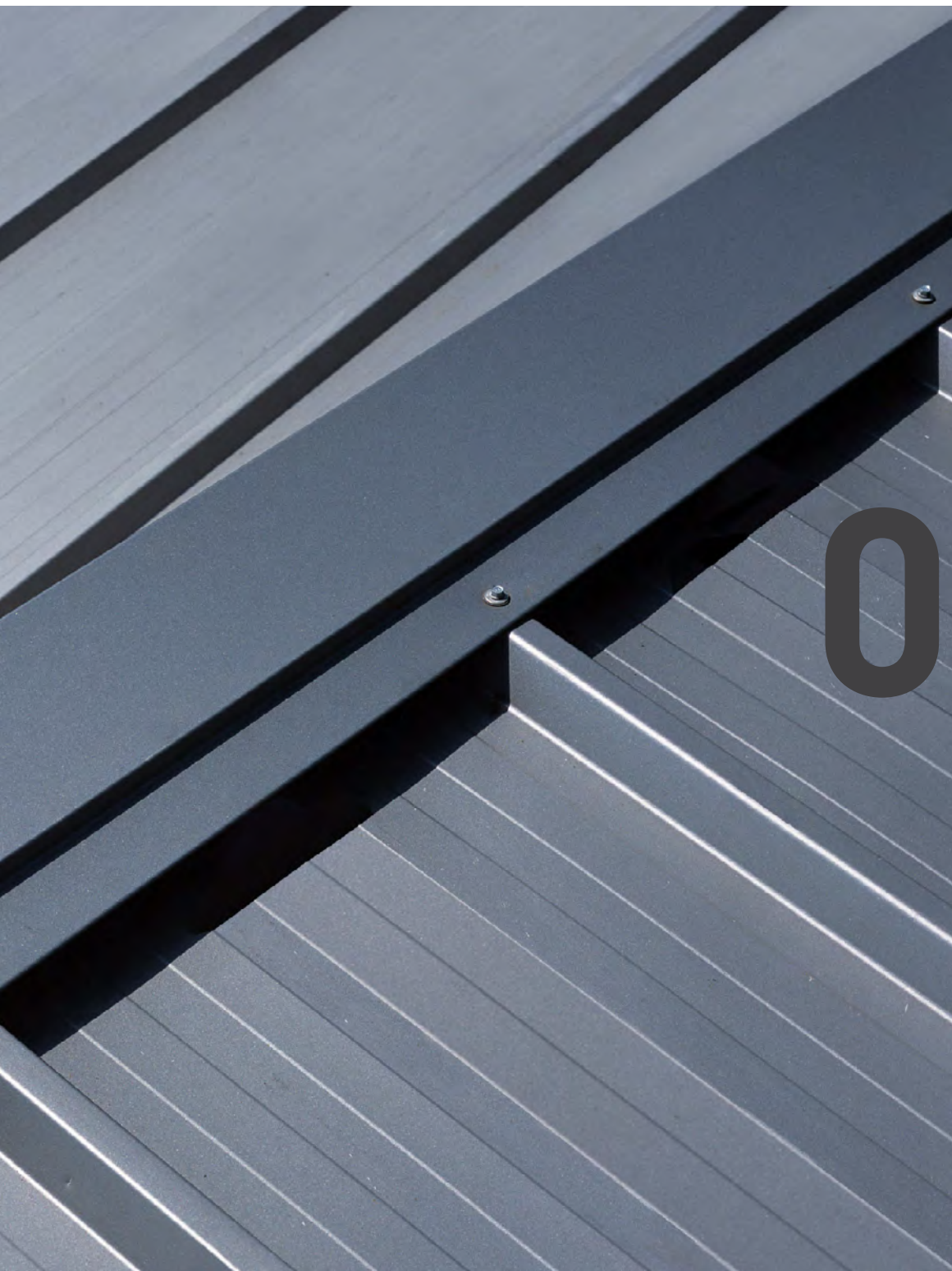






# ROOFS







# TRIMOTERM SNV (ROOF PANELS)

Trimoterm fireproof roofs are perfect solution for pitched roofs. Due to the excellent technical characteristics, a complete range of technical solutions & elements. Trimoterm roofing systems represents an excellent product for protection from weather and climate influence.

## FIRE RESISTANCE

- Excellent fire resistance of up to 180 min

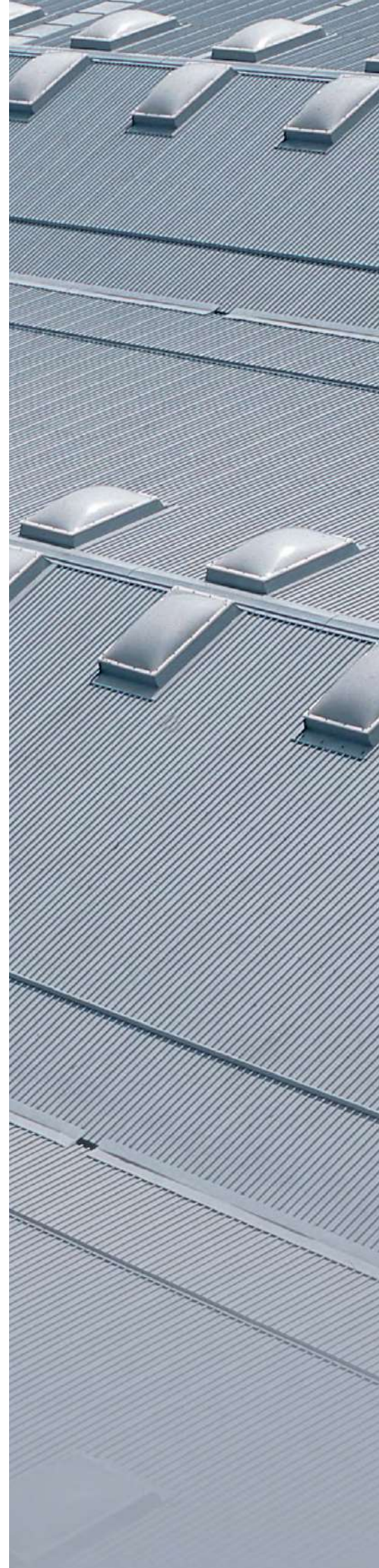
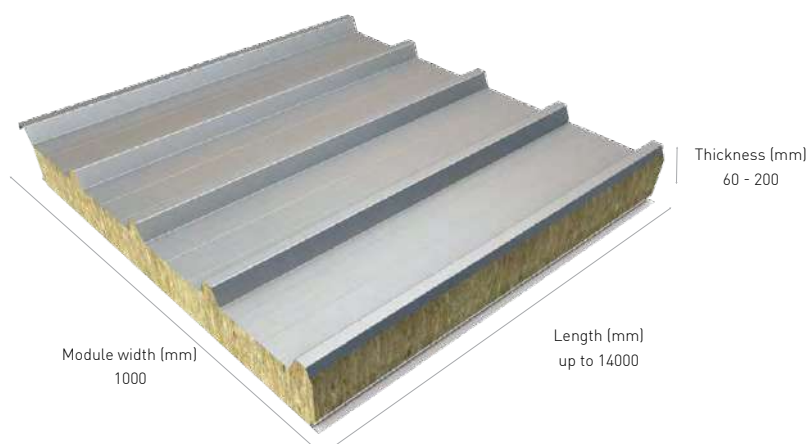
## TOP STRUCTURAL PERFORMANCE

## QUALITY

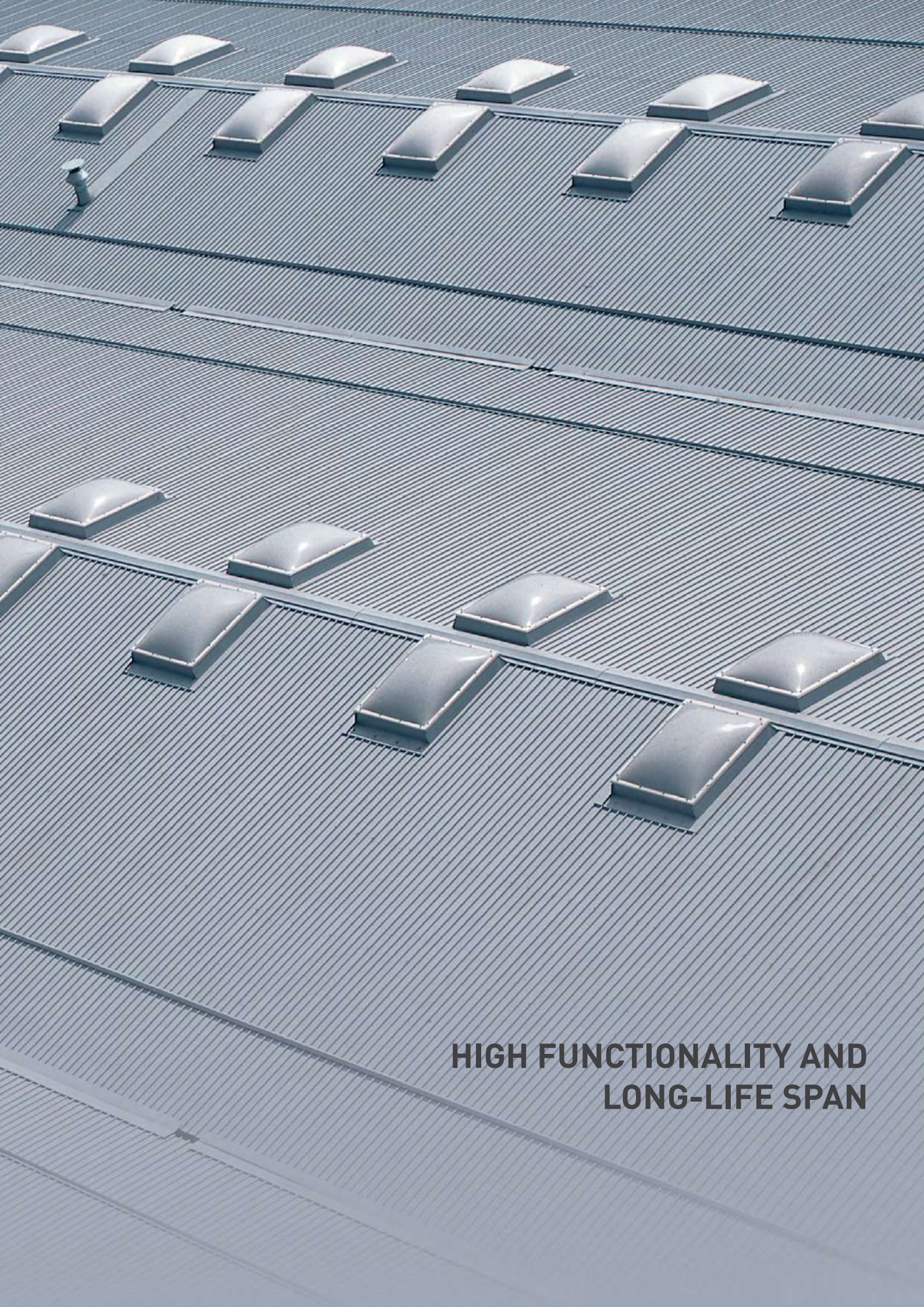
- Outstanding quality and functional solutions with a long-life span

## INSULATION

- Excellent thermal and sound insulation







**HIGH FUNCTIONALITY AND  
LONG-LIFE SPAN**



# MODULAR SPACE SOLUTIONS



# 05





# MODULAR SPACE SOLUTIONS

Trimo is one of the leading providers of modular space solutions, **with over 25 years of experience and almost 100.000 units manufactured and supplied worldwide** to-date.

Trimo modular space solutions are used extensively by private and public investors as **temporary or permanent, easy to set up and efficient** accommodations, offices, showrooms, hotels, schools and kindergartens, infrastructure buildings, etc.

Trimo modular **units** are **efficient, innovative and sustainable; made of natural materials and almost 100% recyclable**. Modular units can be shipped assembled or to keep transport cost to a minimum, supplied flat-packed for on-site installation with just the minimum of tools. Units can also be easily disassembled after use and transferred to a new location.

## PROVEN QUALITY

- 25+ years of experience

## FLEXIBLE IN DIMENSIONS

- Length up to 30 ft, width up to 10 ft, height up to 12 ft, non-standard modular unit sizes are available too

## ENERGY EFFICIENT

- Thermal conductivity values (U) for walls, floor and ceiling as low as 0.15 W/m<sup>2</sup>K

## FIRE SAFETY

- Wall panels are EI Fire resistance class certified (EI 30 – EI 240)

## EASY TO TRANSPORT AND RELOCATE

- Flat-packed or fully factory assembled, completely interchangeable wall panels

## LONG TERM ECONOMIC BENEFITS

- Easy to build and install, designed to be used on many consecutive projects over a long period of time

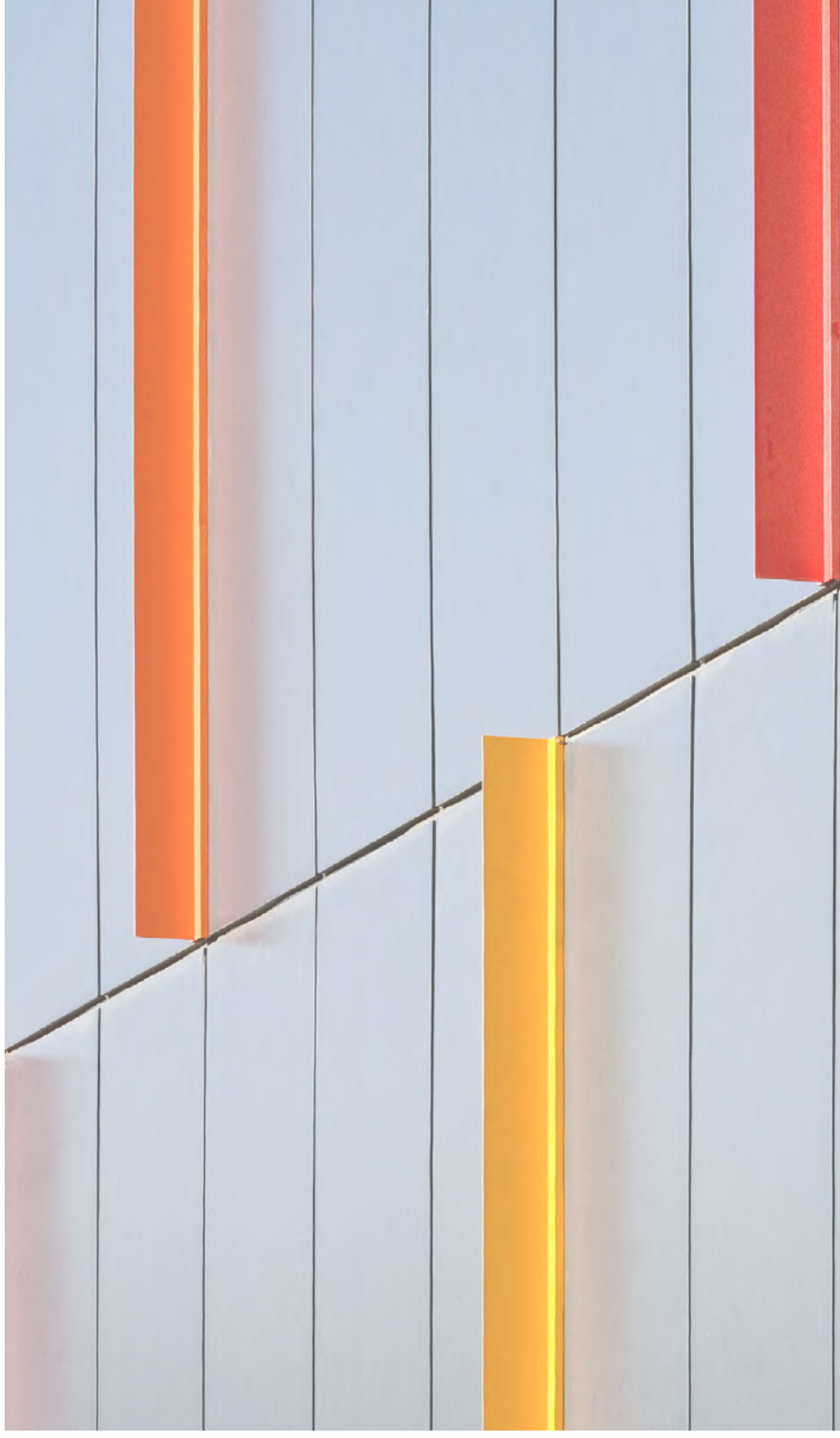
More information about Trimo modular space solutions at:  
[www.trimo-mss.com](http://www.trimo-mss.com)



**QUICK, SAFE AND RELIABLE**



# FIXING AND DECORATIVE ELEMENTS





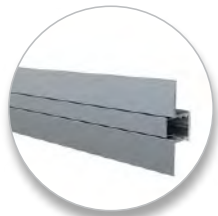


06

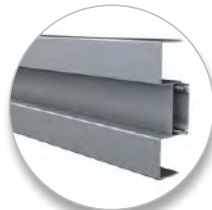
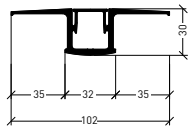
# STUNNING FINISHES

Trimo decorative elements emphasise the selected façade line, cover visible panel joints and give building a touch of superior attractiveness. You can choose from various different options, manufactured from extruded and powder coated aluminium.

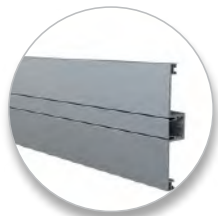
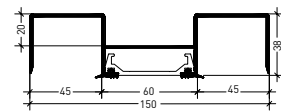
## FIXING ELEMENTS



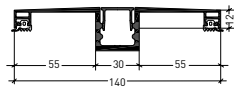
HF 102 - OMEGA PROFILE



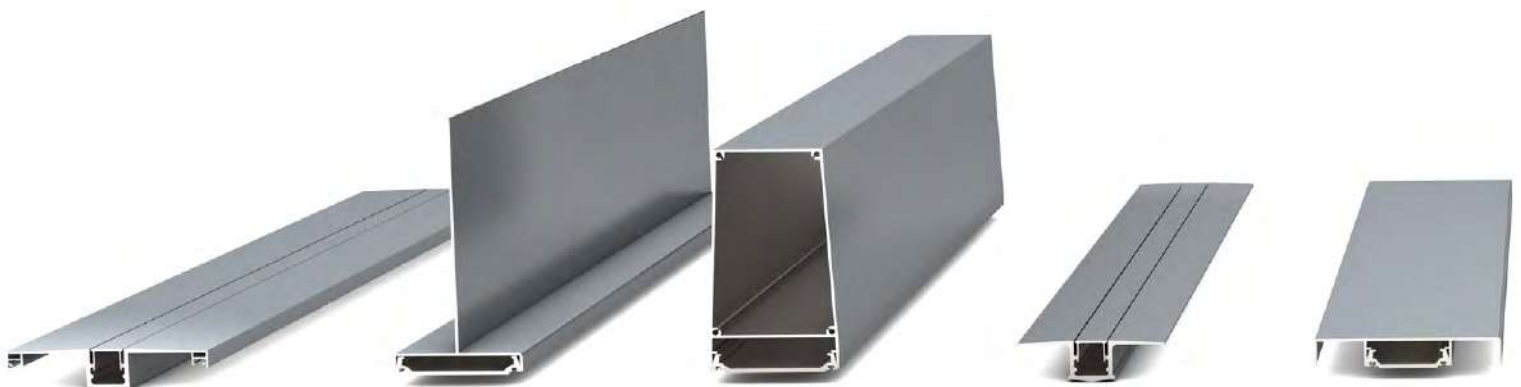
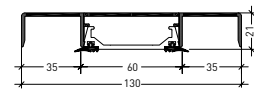
HF6 - DECORATIVE OMEGA PROFILE



HF140 - DECORATIVE OMEGA PROFILE



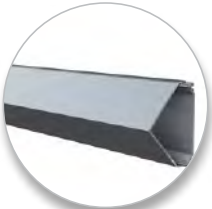
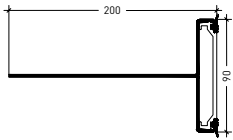
HF4 - DECORATIVE OMEGA PROFILE



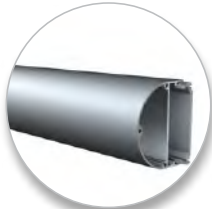
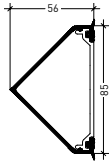
# DECORATIVE ELEMENTS



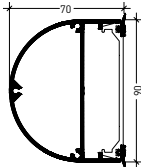
HF1 - T PROFILE



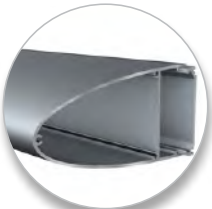
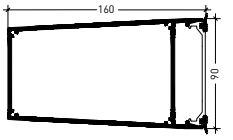
HF7 - TRIANGULAR PROFILE



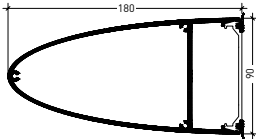
HF9 - SEMI-CIRCULAR PROFILE



HF2 - TRAPEZOID PROFILE



HF8 - ELLIPTICAL PROFILE

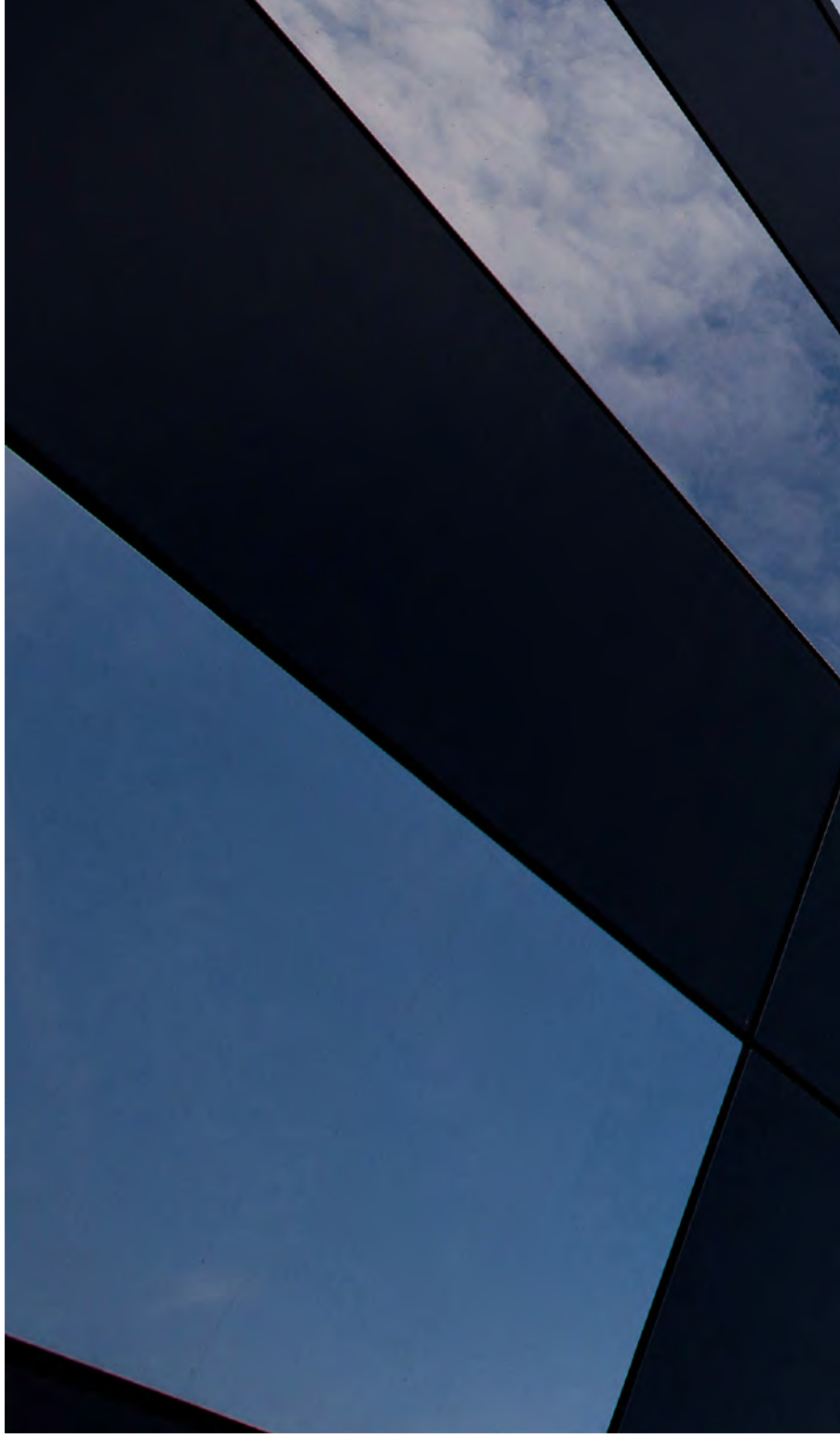


HF5 - DECORATIVE WINDOW PROFILE






# MATERIALS





07





**ALL TRIMO PRODUCTS ARE BUILD OUT OF HIGHEST  
QUALITY MATERIALS. WITH EXCEPTIONAL TECHNICAL  
CHARACTERISTICS AND PERFECTED VISUAL EXPRESSION,  
TRIMO PRODUCTS EXCEL NOT ONLY IN DESIGN BUT ALSO  
IN THEIR PERFORMANCE.**



# MINERAL WOOL

- Class A1 non-combustible reaction to fire classification
- High density 90-120 kg/m<sup>3</sup> for superior structural strength
- Environmentally friendly, landfill disposal as non-hazardous waste
- Recycling costs up to 5 times lower vs PIR/PUR insulation
- Does not absorb water
- Keeps the thermal and structural performance over lifetime
- Does not provide environment conditions for bacteria growth and rodent animals thus suitable also for construction in food & pharmaceutical industry, clean rooms etc.

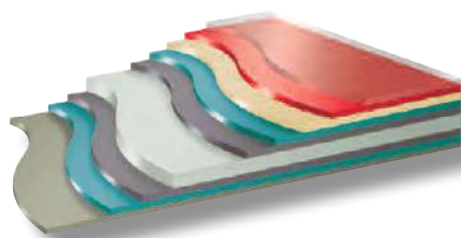
# STEEL AND COATING SELECTION

- External steel sheet thickness 0.50 to 0.70 mm
- Internal steel sheet thickness 0.50 to 0.60 mm
- Base substrate galvanized [Zn, ZnMg, ZnAl]

## PAINT COATING TYPES

- Standard polyester paint SP 25 micron (suitable for C2-C3 corrosion climate environment)
- Polyvinyl den fluorid paint PVDF 25 to 42 micron (suitable for C3-C4 corrosion climate environment)
- Polyurethane paint PUR 50 to 65 micron (suitable for C4-C5 corrosion climate environment)
- PVC laminate coating PVC 120 to 150 micron (suitable for C3-C4 corrosion INTERNAL climate environment)

**Guarantee period is directly influenced by selected paint coating and corrosion climate environment**



COLORCOAT PRISMA\* PUR  
COATING STRUCTURE

### Key

|  |                               |
|--|-------------------------------|
| 15µm additional protective clear layer   | Base steel substrate          |
| 25µm coloured layer with polyamide beads | Galvalloy® metallic coating   |
| 25µm corrosion resistant primer          | Pre-treatment                 |
| Pre-treatment                            | High performance backing coat |
| Galvalloy® metallic coating              |                               |

\*Colorcoat Prisma is trademark of Tata Steel UK Limited

## Risk of corrosion - Classification of ambient conditions according to EN ISO 12994-2

| Corrosion risk category | Examples of typical environments  |  |
|-------------------------|---|--|
|                         | External  | Internal   |
| <b>C1 Very low</b>      | -   | Isolated building. Relative humidity of air: less than 60%   |
| <b>C 2 Low</b>          | Slightly polluted atmosphere, dry climate e.g. rural areas  | Non-isolated building with temporary water condensation e.g. warehouses, sport halls                           |
| <b>C 3 Medium</b>       | Urban or industrial atmosphere with low of CO <sub>2</sub> pollution or coastal areas with low salinity | Premises characterised by high relative humidity of the air and impurities, e.g. breweries, laundries, dairies |
| <b>C 4 High</b>         | Industrial or coastal atmosphere with low salinity  | Swimming pools, chemical factories   |
| <b>C 5 Very High I</b>  | Industrial atmosphere with considerable humidity and aggressive atmospheres                             | Buildings or areas with almost continuous water condensation and high levels of pollution                      |
| <b>C 5 Very High M</b>  | Coastal area with high salinity   |  |

# WORLDWIDE REALIZED PROJECTS



08





# MCLAREN PRODUCTION CENTRE





**LOCATION**

UNITED KINGDOM

**YEAR OF COMPLETION**

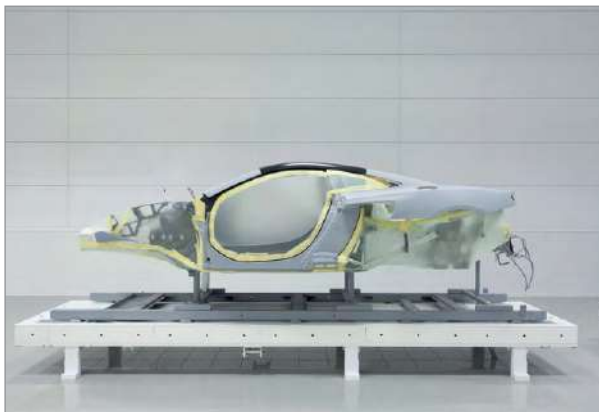
2011

**ARCHITECT**

FOSTER + PARTNERS

**PRODUCT**

QBISS ONE



# PORSCHE CAR SHOWROOM







**LOCATION**  
SWITZERLAND

**YEAR OF COMPLETION**  
2017

**ARCHITECT**  
GOLDBECK RHOMBERG AG

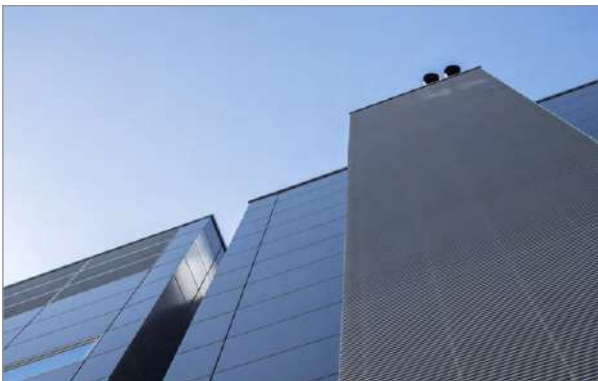
**PRODUCT**  
QBISS ONE



# EQUINIX LD6 DATA CENTRE







**LOCATION**  
UNITED KINGDOM

**YEAR OF COMPLETION**  
2015

**ARCHITECT**  
ARUP ASSOCIATES

**PRODUCT**  
QBISS ONE



## COMMERCIAL CENTRE MANGO





**LOCATION**

SPAIN

**YEAR OF COMPLETION**

2015

**ARCHITECT**

GCA ARQUITECTURA

**PRODUCT**

QBISS ONE

# COMMERCIAL CENTRE HOME







**LOCATION**

UNITED KINGDOM

**YEAR OF COMPLETION**

2015

**ARCHITECT**

MECANOO ARCHITECTEN B.V.

**PRODUCT**

QBISS ONE

# RESEARCH INSTITUTE ELI-ALPS







**LOCATION**

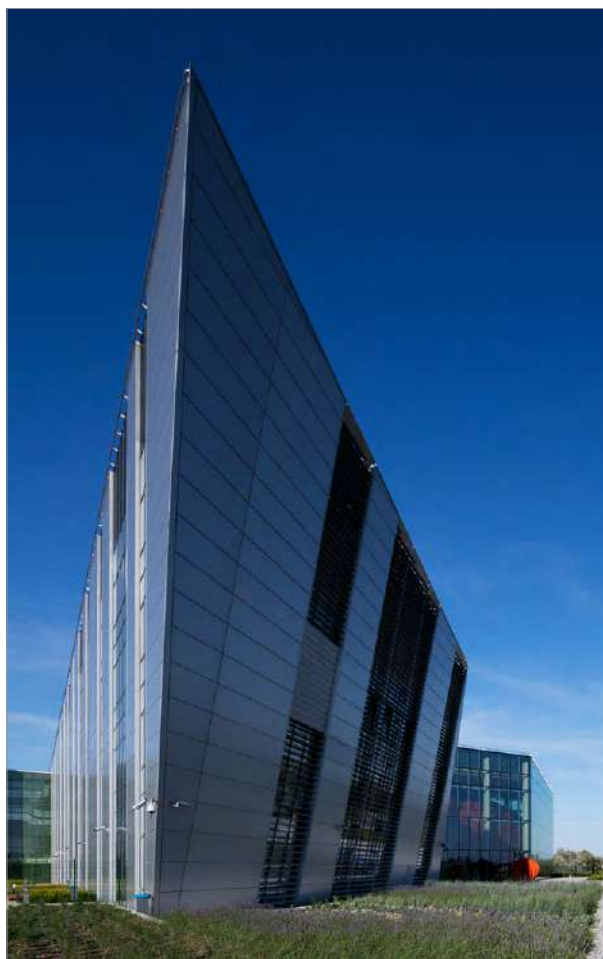
HUNGARY

**YEAR OF COMPLETION**

2017

**PRODUCT**

QBISS ONE





# ORTERER GRUPPE LOGISTIC CENTRE





**LOCATION**

GERMANY

**YEAR OF COMPLETION**

2016

**ARCHITECT**

KEHRBACH PLANWERK

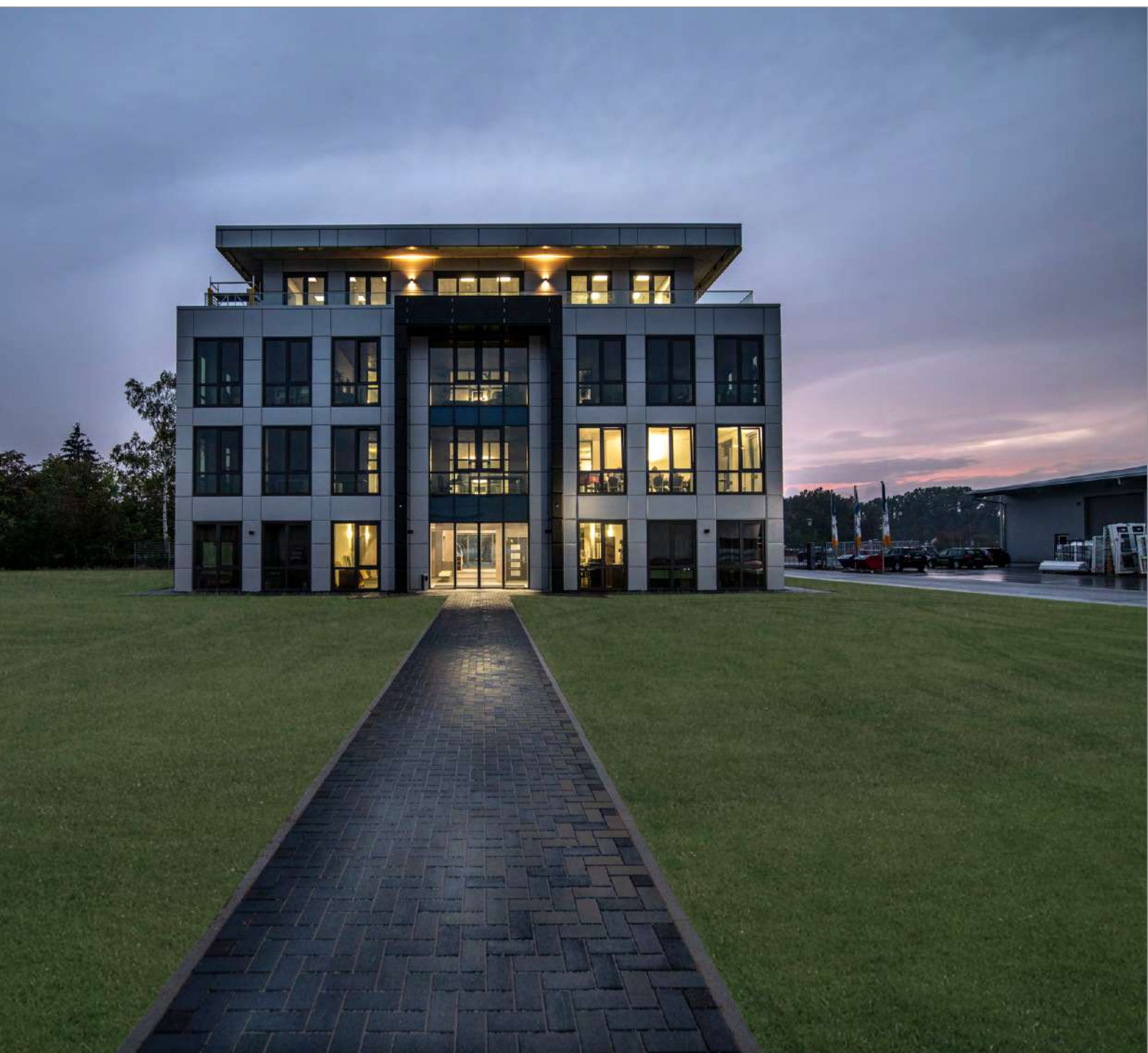
**PRODUCT**

QBISS ONE





# HEADQUARTERS HEKA HERZOG







**LOCATION**

GERMANY

**YEAR OF COMPLETION**

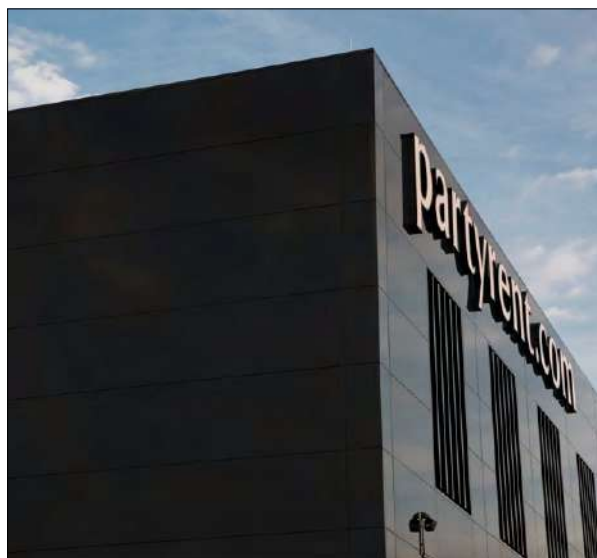
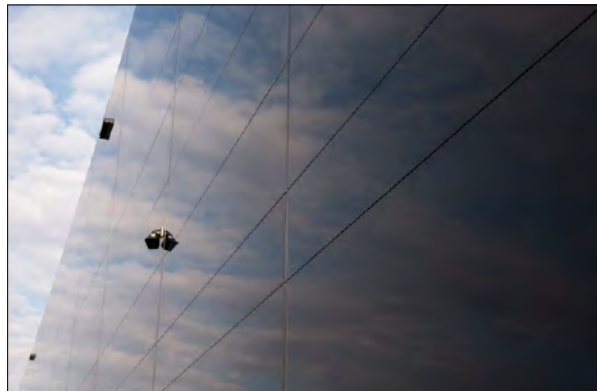
2018

**PRODUCT**

QBISS ONE

## PARTYRENT LOGISTIC CENTRE





#### **LOCATION**

GERMANY

#### **YEAR OF COMPLETION**

2013

#### **ARCHITECT**

JAROSCH ARCHITEKTUR DARMSTADT

#### **PRODUCT**

QBISS ONE



# HEADQUARTERS

## TRIMO D.O.O.

PRIJATELJEVA CESTA 12,  
8210 TREBNJE, SLOVENIA

T: +386 (0)7 34 60 200

F: +386 (0)7 34 60 127

TRIMO@TRIMO-GROUP.COM

WWW.TRIMO-GROUP.COM

# GLOBAL PRESENCE

Find your local contact



# DOWNLOADS

## BROCHURES

- Facade systems
- Roof systems
- General



## TECHNICAL DOCUMENTS

- Facade systems
- Roof systems
- Structural performance



## DESIGN TOOLS

- CAD details
- BIM product libraries



Trimo Group holds full copyrights on the information and details provided on this media, therefore any unauthorized reproduction and distribution is strictly prohibited. Professional care has been taken to ensure that information/details are accurate, correct and completed and not misleading, however Trimo, including its subsidiaries, does not accept responsibility or liability for errors or information, which is found to be misleading. Information/details on this media are for general purposes only. Use of it is on your own initiative and responsibility for compliance with local laws. Any deviations in details and project solutions are user responsibility. In no event, will we be liable for any loss or damage including without limitation, indirect or consequential loss or damage, or any loss or damage whatsoever arising from loss profits arising out of or in connection with, the use of this media. All information issued by Trimo Group is subject to continuous development and information/details contained on this media are current at date of issue. It is user's responsibility to obtain most up-to-date information from Trimo when information/details are used for project.

The last version of the document is available on [www.trimo-group.com](http://www.trimo-group.com). Latest version of published document in English language prevails over other translated language documents.

For information about the delivery of panels see Trimo's General conditions  
(<https://trimo-group.com/en/trimo/general-conditions-of-sale>).